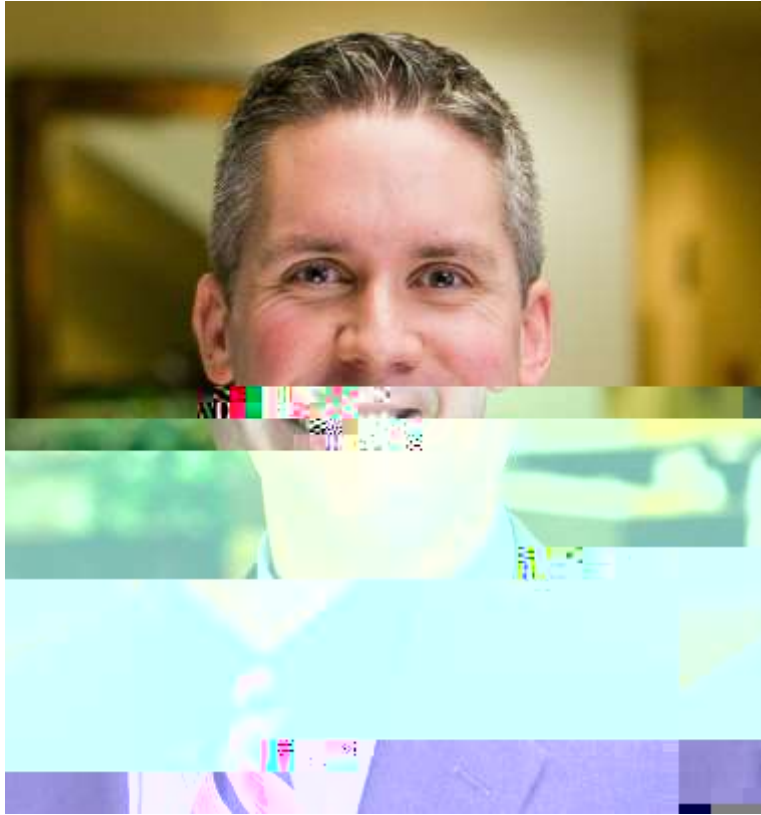


2020 Regulations

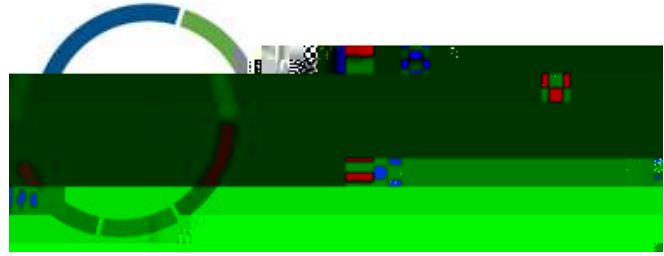


Back to Campus - Back to Title IX: Confronting the Challenges of the 2020 Regulations



H O S T

Visit us on the web at ELA.LAW



JOSH SALSBUREY

Member
Sturgill, Turner, Barker & Moloney



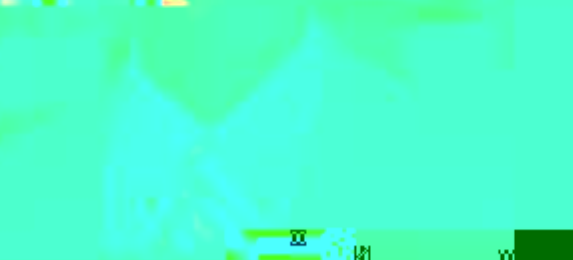
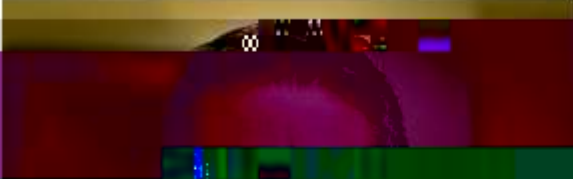
Global HR Legal Solutions

Employment Law Alliance is a comprehensive global network of local labor, employment and immigration attorneys that delivers timely, cost-effective legal solutions.



1788

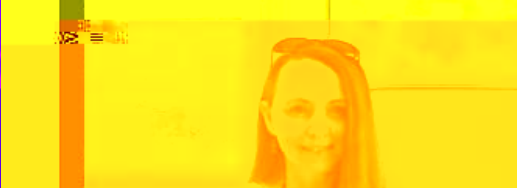




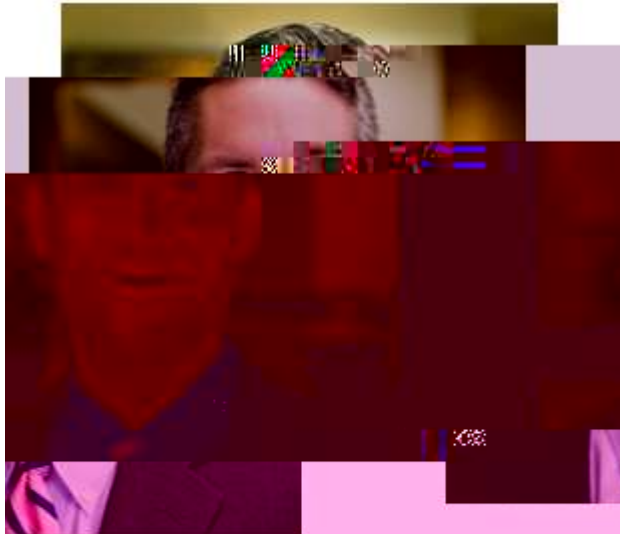
1. **Introduction**

2. **Members**

3. **Agenda**



4. **ELA in Austria**



HOST

the web at ELA.LAW

Visit us on



www.ELA.LAW

ELA
The
Law
of
the
Energy
Industry

Energy
Law
of
the
Industry

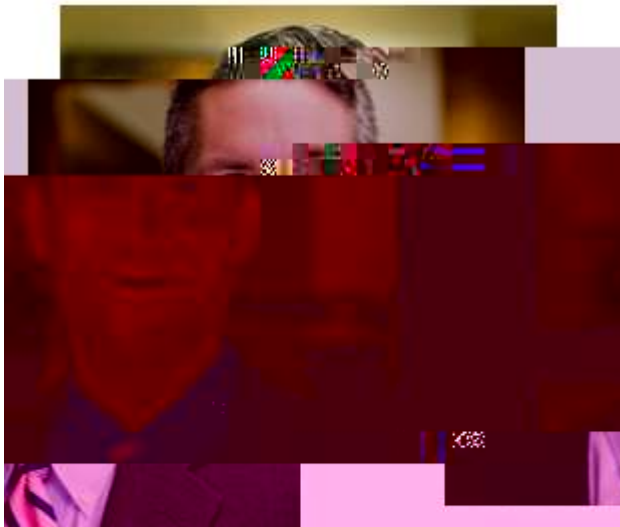
Energy
Law
of
the
Industry

www.ELA.LAW

Energy
Law
of
the
Industry

ELA

www.ELA.LAW



OST

Visit us on the web at ELA.LAW

Q&A

Welcome to Q&A

Questions you ask will show up here. You, the host and panelists will be notified to see all questions.



...

Navigation bar with icons for home, search, and other functions.



The ELA Presents



Event Resources

Presentation Slides & Certificate of Attendance

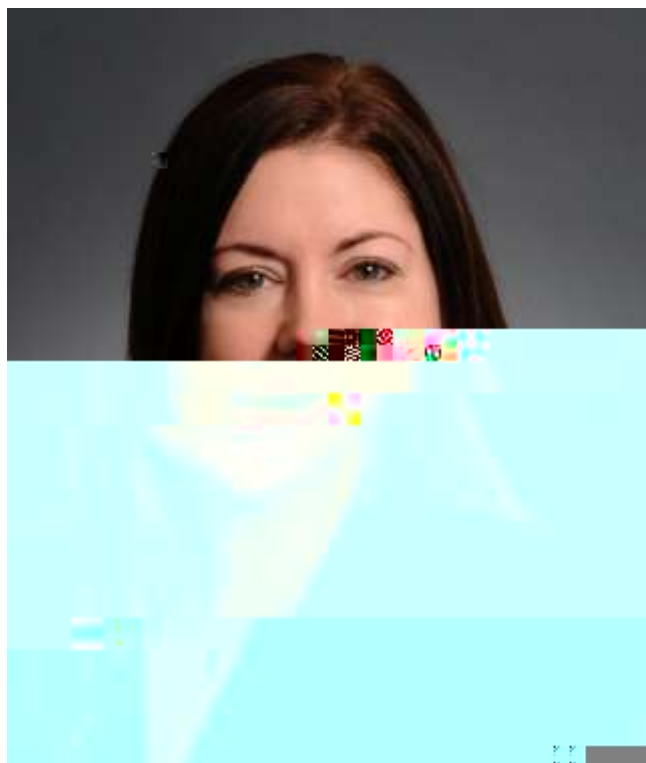


Resources provided by the speakers and their firms:



ELA Resources





MODERATOR

SUSAN DENIKER

Member

West Virginia



Overview

Back to Campus - Back to Title IX: Confronting the Challenges of the 2020 Regulations



Panelists

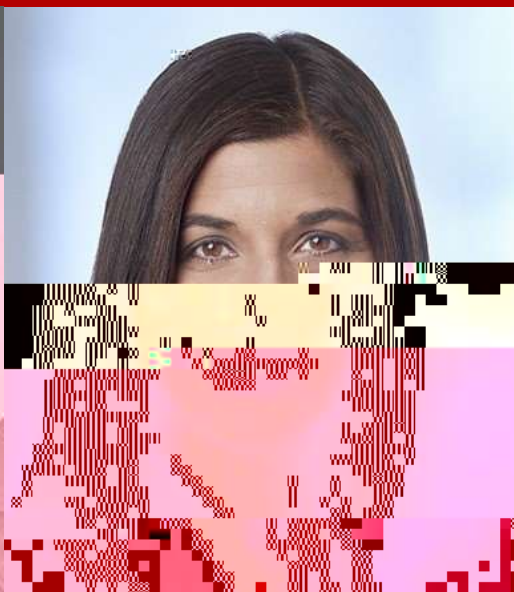


DEREK ISHIKAWA

California
dishikawa@hkemploymentlaw.com

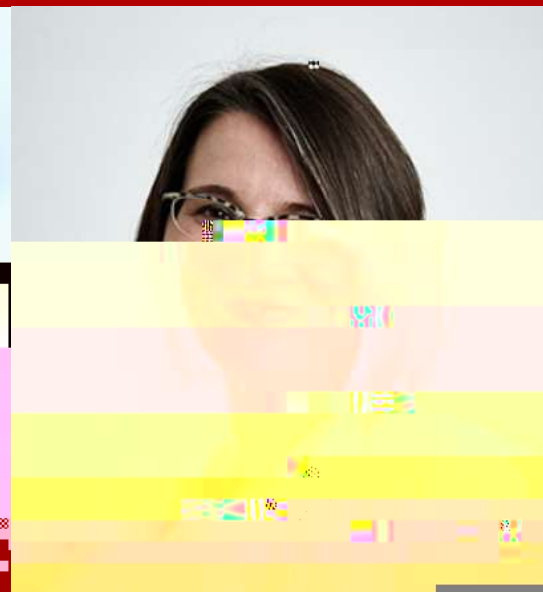


Hirschfeld
Kraemer



KATHRYN M. NASH

Minnesota
kathryn.nash@lathropgpm.com



KATE NASH

Missouri - Eastern
knash@tuethkeeney.com



TUETH KEENEY
COOPER MOHAN JACKSTADT P.C.

Derek Ishikawa
Attorney
Hirschfeld

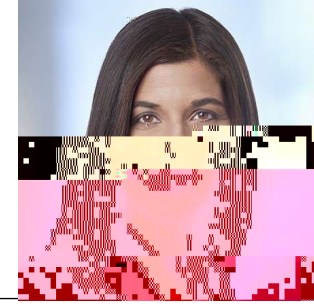


Derek Ishikawa



Amending Notice of Allegations

Access to Directly Related Evidence



Kathryn M. Nash
Partner
Lathrop GPM LLP
Minnesota



Changes Regarding "Statements" Not Subject to Cross-Examination

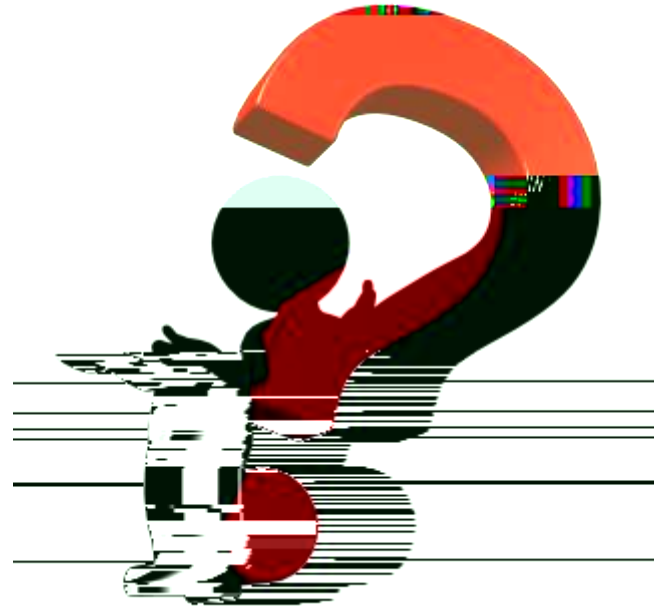


Kate Nash
Shareholder
Tueth Keeney Cooper Mohan &
Jackstadt, PC
Missouri - Eastern

-
-
-
-

Derek Ishikawa



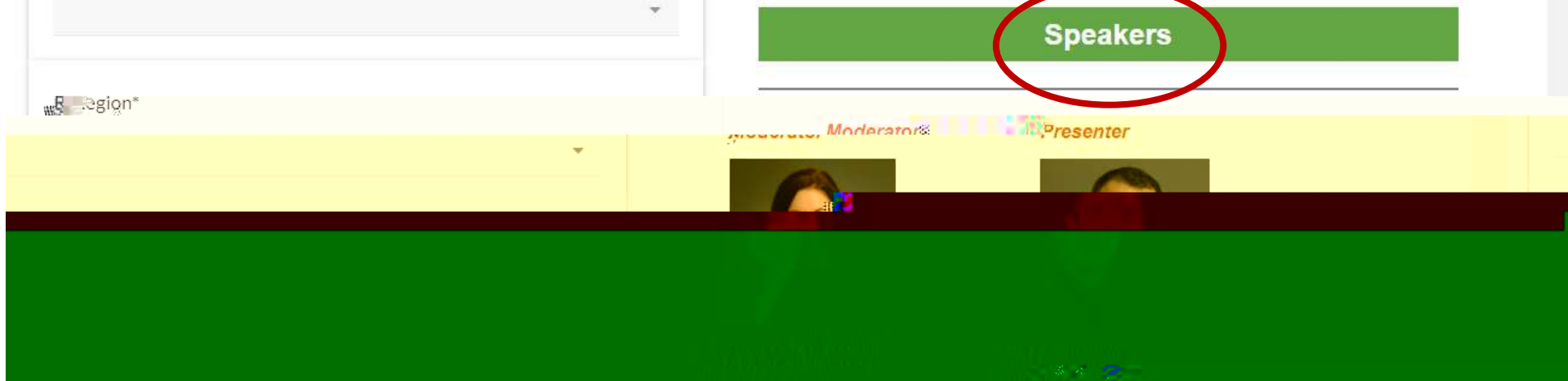




The ELA Presents



Speakers

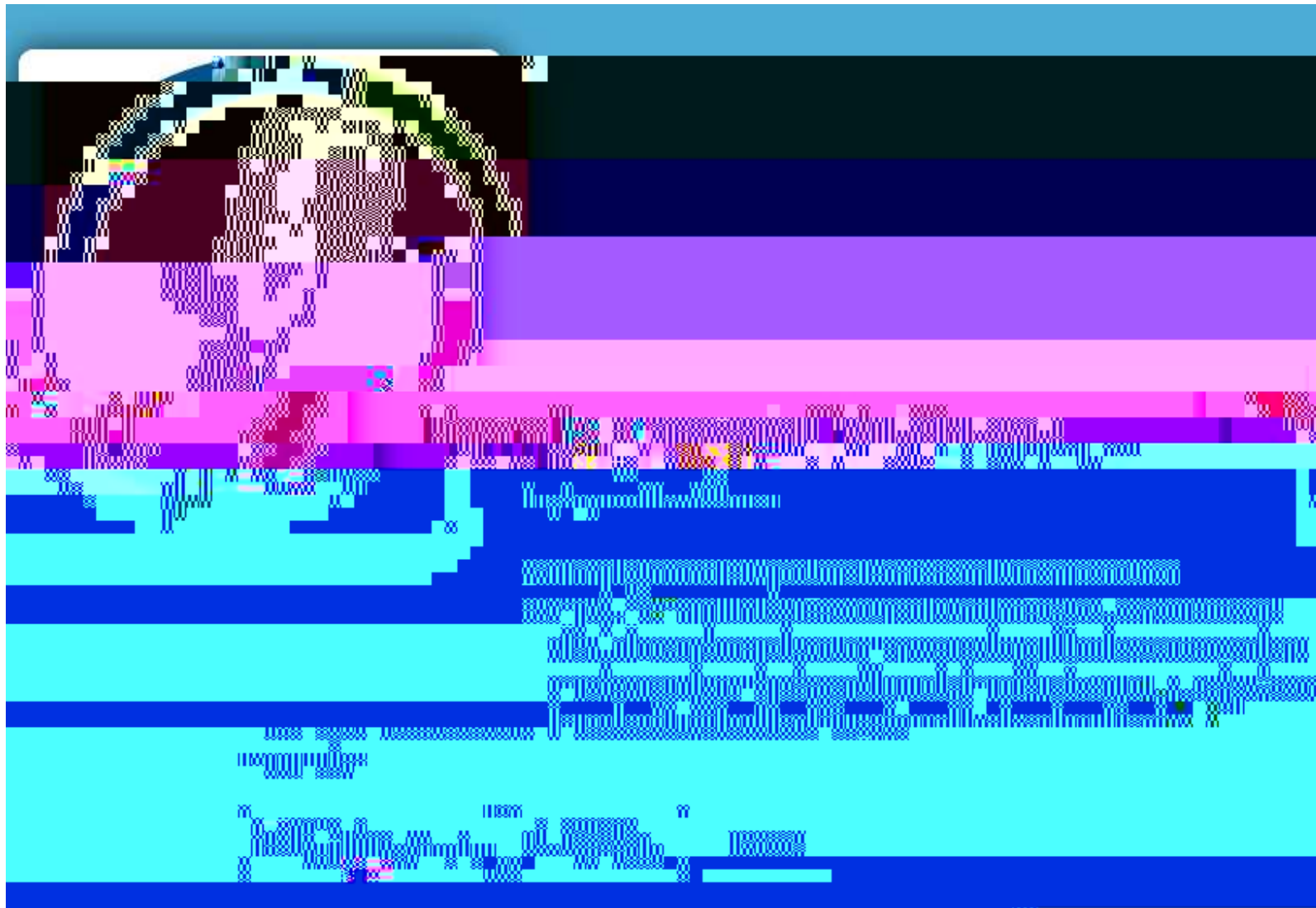


Coming Up Next!

[Register today!](#)

September 29, 2021





Listen to the
Employment
Matters
Podcast

Continuing Education Credit



The ELA Presents



Event Resources

Presentation Slides & Certificate of Attendance



Resources provided by the speakers and their firms:



ELA Resources

Continuing Education Credit



This program is valid for **1.25** PDCs

Course Number: **21-4QTGY**

Visit www.SHRMcertification.org to submit PDCs

A **Certificate of Attendance** and supporting materials are available for download in the resources tab and will also be included in your follow-up materials sent via email. Attendees seeking continuing education credit should submit these materials directly to the appropriate organization.

